

Foodservice Equipment • Material Handling, Healthcare & Cleanroom Equipment • Retail Display

314 Series Sinks

*Deep-Drawn Coved Corner
Four-Compartment*



*four-compartment sink
with double drainboards*

BOWL SIZES ACCOMMODATE



A WIDE RANGE OF POTS

Item #: _____
Model #: _____
Project #: _____
SIS #: _____

Optional Accessories	Model #	Qty.
Stainless steel legs		
Stainless steel bullet feet		
Lever drains		
Faucets		
Sink covers		
Waste outlets		
Sink kits		



- Heavy gauge stainless steel construction — bowls are type 304; drainboards and backsplash are type 304.
- Deep-drawn seamless coved corner bowls.
- 14" (356mm) water level is standard.
- Swirl-away drainage.
- Legs welded adjacent to sink bowls for maximum weight support and stability.
- 10" (254mm) standard backsplash includes 1" (25mm) upturn and tile edge for easy installation and feathering to wall/splash surface.
- Adjustable non-corrosive bullet feet.
- Die-stamped creased drainboards for positive drainage.

Sink Kits for 314 Series Sinks

Kits include **stainless steel crossbraced legs, stainless steel gussets and stainless steel feet** as listed below.

Kit A

description	add suffix
Includes crossbraced legs, gussets, feet, and T&S faucet*	"CLF"

Kit B

description	add suffix
Includes crossbraced legs, gussets, feet, T&S faucet*, and lever drain	"CLFD"

Kit C

description	add suffix
Includes crossbraced legs, gussets, feet, T&S faucet*, and lever drain with overflow	"CLFDO"

* T&S faucet #313293

Spec sheets available for viewing, printing or downloading from our online literature library at www.eaglegrp.com

314 Series Coved Corner Four-Compartment Sinks

NSF-approved installations:

All EAGLE sinks bearing the NSF Certification Mark are built in compliance with the National Sanitation Foundation Standard Number 2.

EAGLE is also listed to manufacture custom-built sinks in compliance with the National Sanitation Foundation Standard Number 2.

Material:

Sink Bowl – Heavy gauge type 304 stainless steel.

Top – Drainboards, backsplash and rolled rims are heavy gauge type 304 stainless steel.

Legs – 1½" (41mm)-diameter heavy-gauge galvanized tubing with plated 12-gauge gussets and high-impact corrosion resistant fully adjustable bullet feet – crossbracing is 1" (25mm)-diameter heavy-gauge galvanized tubing.

Optional stainless steel legs utilize 16/304 tubing.

Design and Construction Features:

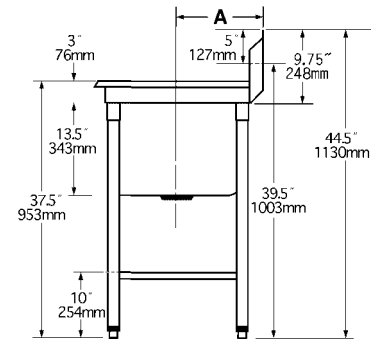
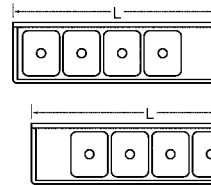
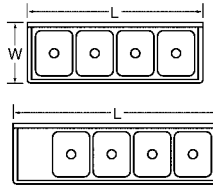
- All bowls have deep-drawn one-piece seamless construction using state-of-the-art hydraulic presses.
- Drainboards, when provided, are integrally welded.
- All sink bowls have a generous radius with a minimum dimension of 3" (76mm) and are rectangular for maximum capacity.
- Leg locations are adjacent to sink bowls, providing increased stability and maximum weight support where needed.
- Leg gussets welded to a die-cut heavy-gauge reinforcing plate.
- Entire assembly is fuse-welded and planished providing a one-piece seamless sink unit.
- Welded areas are high-speed belt blended to match adjacent surfaces with continuity of satin finish.
- 10" (248mm)-high full length standard backsplash features 1" (25mm) upturn and tile edge for easy installation and feathering to wall/splash surface.
- All outside corners of sink assembly are bullnosed to provide safe, clean edges.
- 14" (356mm) water level — 17" (432mm) flood level.

Mechanical:

- Water supply is ½" (13mm) IPS for hot and cold lines.
- Faucet holes are 1½" (29mm) punched on 8" (203mm) centers; two sets of faucet holes are provided.
- Faucets are available as options.
- Basket-type waste drains included fit sink bowls' 3½" (89mm) opening and feature 1½" (38mm) outlet.

Drain location for rough-in

bowl size in.	mm	Dimension A in.	mm
19" x 16"	483 x 406	13½"	343
19½" x 17½"	495 x 445	14½"	365
24" x 18"	610 x 457	16½"	422
24" x 24"	610 x 610	16"	406



bowl size width x length	# of drbds	drbd length		weight		overall size width x length		model #
		in.	mm	lbs.	kg	in.	mm	
19" x 16" (483 x 406mm)	0	n/a		125	56.7	26" x 75"	660 x 1905	314-16-4
	1	18"	457	144	65.3	26" x 91½"	660 x 2324	314-16-4-18R or L
	2	18"	457	163	73.9	26" x 108"	660 x 2743	314-16-4-18
	1	24"	610	150	68.0	26" x 97½"	660 x 2476	314-16-4-24R or L
	2	24"	610	175	79.5	26" x 120"	660 x 3048	314-16-4-24
	1	30"	762	155	70.3	26" x 103½"	660 x 2629	314-16-4-30R or L
	2	30"	762	185	84.0	26" x 132"	660 x 3353	314-16-4-30
	1	36"	914	160	72.6	26" x 109½"	660 x 2781	314-16-4-36R or L
19½" x 17½" (495 x 445mm)	2	36"	914	195	88.5	26" x 144"	660 x 3658	314-16-4-36
	0	n/a		130	59.0	27¼" x 81"	705 x 2057	314-17.5-4
	1	18"	457	149	67.6	27¼" x 97½"	705 x 2464	314-17.5-4-18R or L
	2	18"	457	168	76.2	27¼" x 114"	705 x 2896	314-17.5-4-18
	1	24"	610	155	70.3	27¼" x 103½"	705 x 2629	314-17.5-4-24R or L
	2	24"	610	180	81.6	27¼" x 126"	705 x 3200	314-17.5-4-24
	1	30"	762	160	72.6	27¼" x 109½"	705 x 2781	314-17.5-4-30R or L
	2	30"	762	190	86.2	27¼" x 138"	705 x 3505	314-17.5-4-30
24" x 18" (610 x 457mm)	1	36"	914	165	74.8	27¼" x 115½"	705 x 2933	314-17.5-4-36R or L
	2	36"	914	200	90.7	27¼" x 150"	705 x 3810	314-17.5-4-36
	0	n/a		135	61.2	32¼" x 83"	819 x 2108	314-18-4
	1	18"	457	154	69.9	32¼" x 99½"	819 x 2527	314-18-4-18R or L
	2	18"	457	173	78.5	32¼" x 116"	819 x 2946	314-18-4-18
	1	24"	610	160	72.6	32¼" x 105½"	819 x 2680	314-18-4-24R or L
	2	24"	610	185	83.9	32¼" x 128"	819 x 3251	314-18-4-24
	1	30"	762	165	74.8	32¼" x 111½"	819 x 2832	314-18-4-30R or L
24" x 24" (610 x 610mm)	2	30"	762	195	88.5	32¼" x 140"	819 x 3556	314-18-4-30
	1	36"	914	170	77.1	32¼" x 117½"	819 x 2984	314-18-4-36R or L
	2	36"	914	205	93.0	32¼" x 152"	819 x 3861	314-18-4-36
	0	n/a		153	69.4	31" x 107"	787 x 2718	314-24-4
	1	18"	457	172	78.0	31" x 123½"	787 x 3137	314-24-4-18R or L
	2	18"	457	191	86.6	31" x 140"	787 x 3556	314-24-4-18
	1	24"	610	178	80.7	31" x 129½"	787 x 3289	314-24-4-24R or L
	2	24"	610	203	92.1	31" x 152"	787 x 3861	314-24-4-24
24" x 24" (610 x 610mm)	1	30"	762	183	83.0	31" x 135½"	787 x 3442	314-24-4-30R or L
	2	30"	762	213	96.6	31" x 164"	787 x 4166	314-24-4-30
	1	36"	914	188	85.3	31" x 141½"	787 x 3594	314-24-4-36R or L
	2	36"	914	223	101.2	31" x 176"	787 x 4470	314-24-4-36

All units have two sets of faucet holes.